

EMERGENCY LIGHTING EQUIPMENT



Item No. 184009

INSTRUCTION MANUAL



IMPORTANT SAFEGUARDS READ AND FOLLOW ALL SAFETY INSTRUCTIONS.

1. The equipment is for use with grounded lighting fixtures, indoor, dry and damp.
2. Do not mount near gas or electric heaters.
3. Do not use this equipment in high-risk task area lighting or for other than intended use.
4. To prevent electric shock, switch off the mains circuit until installation is complete.
5. Installation and servicing should be performed by qualified personnel.
6. The equipment should be mounted at locations and at heights where it will not be easily accessible by unauthorized personnel.
7. For normal operation and emergency operation of fluorescent lamps, no need extra electronic ballast.
8. The equipment requires an unswitched A.C. power supply of 120-277V.
9. The equipment has been evaluated for use with T8 one or two 17W, 18W fluorescent lamps, one T8 32W, 36W fluorescent lamp. It can work for 90 minutes under emergency mode.
10. The equipment makes one lamp operating in emergency mode.
11. Lighting fixture manufacturers, electricians and end-users need to ensure product system compatibility before final installation.
12. The use of accessory equipment not recommended by the manufacturer may cause an unsafe condition.
13. Live and neutral power supply wires shall be correct connected. Reverse connection may damage the equipment.
14. Surrounding operation temperature Ta: -20~50°C.
15. Built in battery pack replaceable.
16. Make sure the polarity is correct when connecting the batteries.
17. According to UL 924 SH3:

| T8 fluorescent lamp | Max. mounting height |
|---------------------|----------------------|
| 17W | 1.15m |
| 18W | 1.22m |
| 32W | 1.57m |
| 36W | 1.26m |

SAVE THIS INSTRUCTIONS

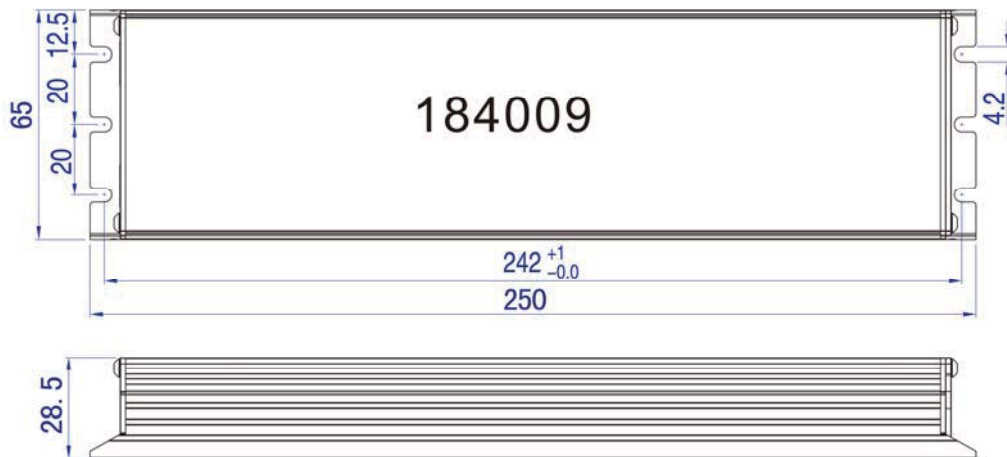
1. The Emergency Lighting Equipment set contains

- one 184009 with one 4.8V / 1.8Ah battery pack inside
- one test switch with LED signal lamp
- one Instruction manual

2. Installation instruction

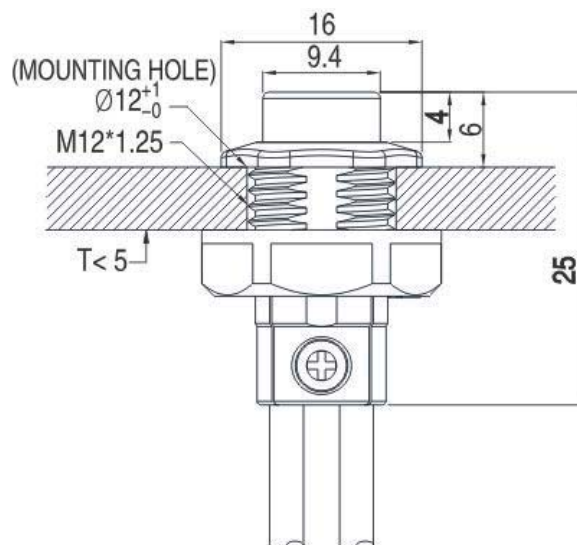
- The equipment can be used with T8 one or two 17W, 18W fluorescent lamps, one T8 32W, 36W fluorescent lamp.
- The equipment requires an unswitched A.C. power supply of 120-277V.
- Select a convenient location on the fixture for the test switch with LED signal lamp so it can be seen after installation.
- Drill a 12 mm hole in the gear tray and screw the test switch into the hole. Connect the wires from the test switch to the emergency equipment according to the diagram (The wire gauge is 18AWG or 1.5mm²).

Dimension:



UNIT: mm

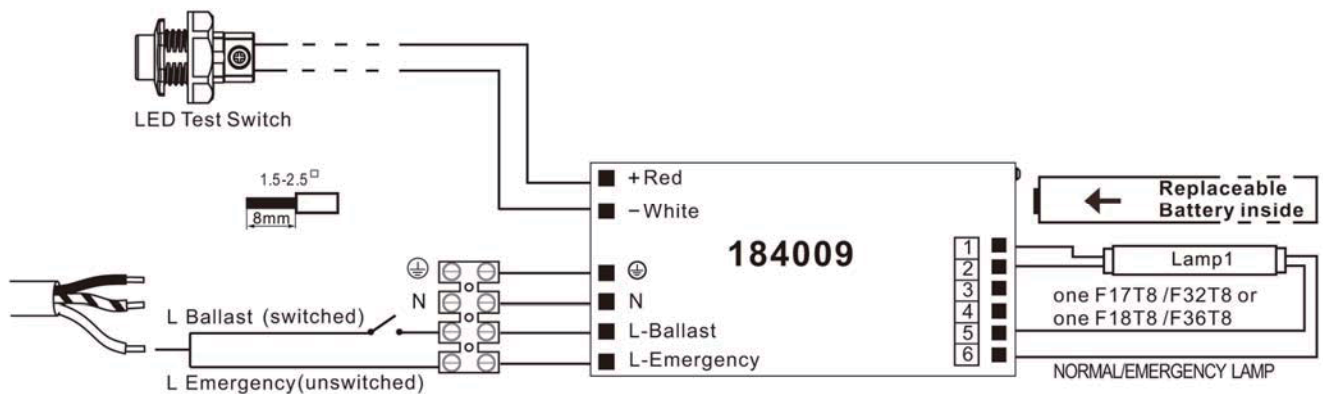
LED test switch:



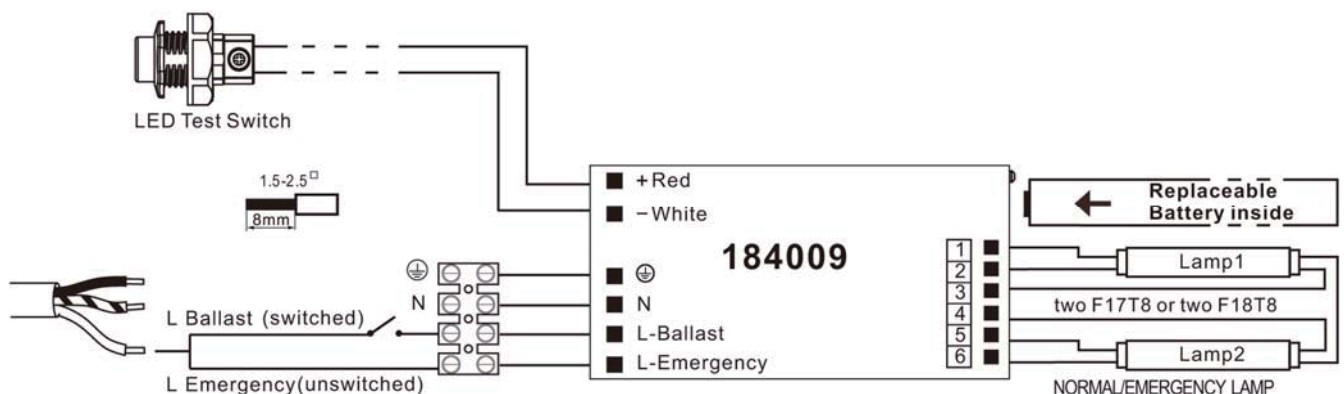
UNIT: mm

3. Wire Diagram

For one lamp



For two lamps



4. Operation

Normal mode –The A. C. power operates the fluorescent lamps as intended. The emergency power supply is in standby charging mode. The LED signal lamp is lit, indicating that the batteries are being charged.

Emergency mode – The A. C. power fails and the batteries are being charged to take over the operation. One fluorescent lamp go into emergency mode and the LED signal lamp is switched off. When the A. C. power is restored the emergency power supply switches the system back to normal mode and resumes battery charging. The minimum emergency operation time is 90 minutes.

Charging time –The charging time for the battery after discharging is 24 Hours.

LED Indicator – The LED indicator will working under normal operation, the LED indicator will turn off under abnormal operation, such as the power supply cord in not connected proper, the Battery is not connected proper, etc.

5. Maintenance

Monthly - Conduct a 30 seconds discharge test by switching off the mains power.
The signal lamp is switched off and one lamp is operating at reduced light output.

Annually- Conduct a 90 minutes full discharge test by switching off the mains power to control if the operating time of the equipment is accordance with the specification.